

MONTHLY MEMBERSHIP PROGRESS REPORT

LOCATION INDIA

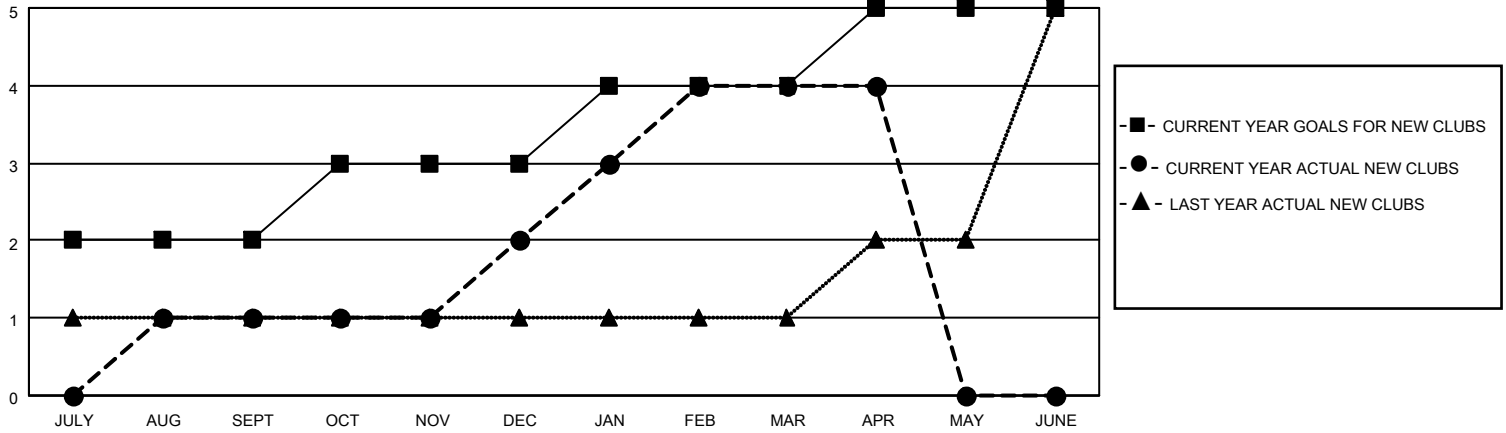
District 324 K

Results as of: 4/30/2023

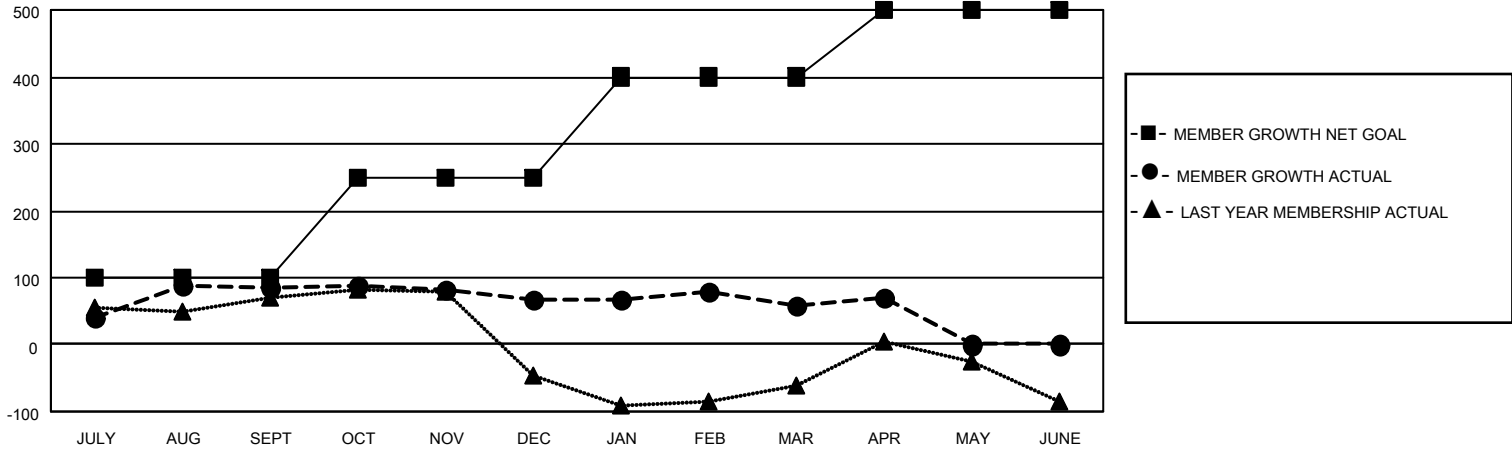
Clubs			
RESULTS FOR 2022-2023			
QUARTER	NEW CLUB GOAL	NEW CLUBS	DROPPED CLUBS
JULY/AUG/SEPT	2	1	1
OCT/NOV/DEC	1	1	1
JAN/FEB/MAR	1	2	1
APR/MAY/JUNE	1	0	0

Members			
RESULTS FOR 2022-2023			
QUARTER	MEMBER GROWTH NET GOAL	MEMBER GROWTH ACTUAL	DROPPED MEMBERS ACTUAL (including transfers)
JULY/AUG/SEPT	100	131	36
OCT/NOV/DEC	150	66	81
JAN/FEB/MAR	150	80	84
APR/MAY/JUNE	100	18	8

GOALS AND ACTUAL NEW CLUBS CUMULATIVE



GOALS AND ACTUAL MEMBERS CUMULATIVE



DROPPED CLUBS: 3

45 CLUBS OF 68 ADDED 1 OR MORE NEW MEMBERS

GENDER DISTRIBUTION

DROPPED MEMBERS

DECEASED	10
CLUB CANCELLED	31
OTHER	168
TOTAL	209

[CLICK HERE FOR CUMULATIVE MEMBERSHIP DATA](#)

MALE	1,694 (73.43%)
FEMALE	612 (26.53%)
NON BINARY	0 (0.00%)
PREFER NOT TO ANSWER	1 (0.04%)

TOTAL FAMILY UNIT MEMBERS 765

FAMILY MEMBERS PAYING HALF DUES 470